

MPD-12

1 Year Worldwide Warranty

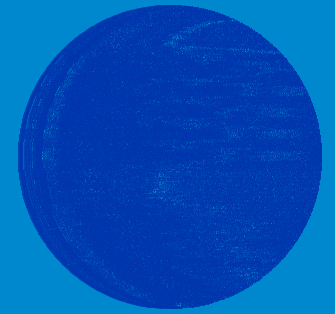
The Bierley MPD-12 carries a one year worldwide warranty, effective from the original date of purchase by the consumer.

For warranty claims, the complete product and accessories must be returned with the original purchase receipt to your local supplier or directly to Bierley in the USA.

Warranty void in the event of damage or abuse caused, in the opinion of Bierley, by general wear and tear, abuse, impact, neglect or by connecting other devices, batteries or power supplies to the unit.

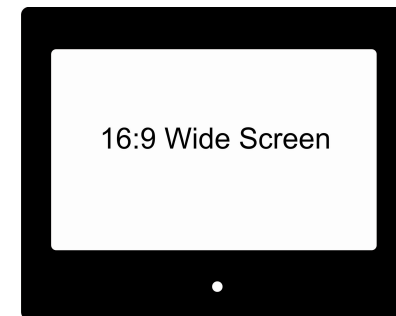
Bierley

MPD-12

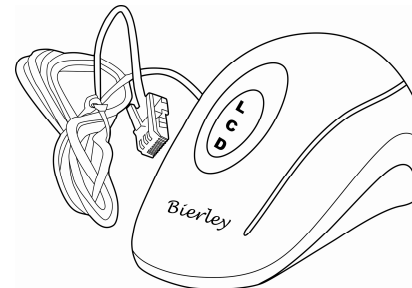


Check List:

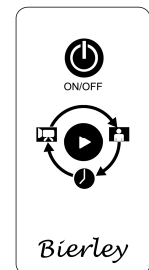
MPD-12 LCD



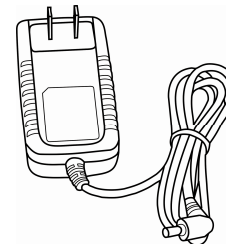
MPD-12 Camera



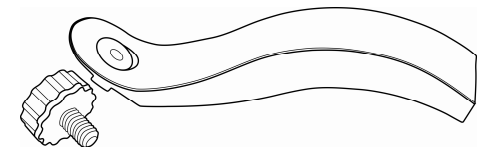
Remote Control



Power Supply



Stand



Set up

- ▶ Carefully place the MPD-12 face down and install the stand
- ▶ Stand the unit upright and plug in the camera
- ▶ Plug the power supply connector into the MPD-12
- ▶ Plug the power supply into a suitable wall outlet

Note: The MPD-12 will turn on automatically when first connected to a power source.

Using the MPD-12

1. Use as a magnifier

- ▶ Move the camera unit over any text or images and they will be magnified onto the screen.

2. Use as a photo frame

- ▶ Press the play button on the remote control once to go to the photo frame.
- ▶ Some default images will be displayed until you plug in a USB drive with your own photos.
- ▶ To display your own photo's, plug in a USB drive containing the photo's and the MPD-12 will be display them one by one.

Note: The MPD-12 can display images of any size, but the ideal size is 1280 x 800.

3. Use as a digital clock

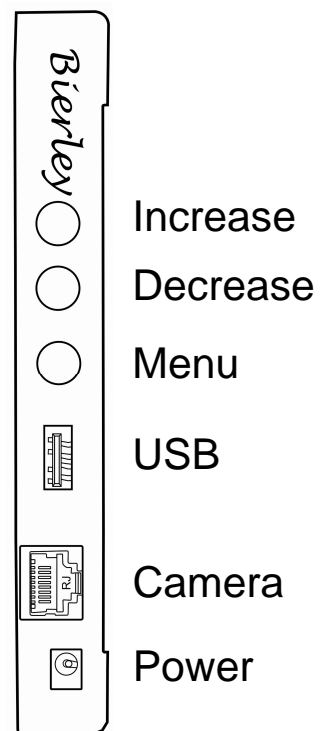
- ▶ Press the play button until the digital clock appears.

Set Date / Time




Press the Menu button (see below) to go to Date / Time set up.

Press the Increase button to increase the date / time, or press the Decrease button to decrease the date / time, press the Menu button again to confirm the changes.

MPD-12 side panel



Remote Control

-  Camera
-  Photo Frame
-  Digital Clock

